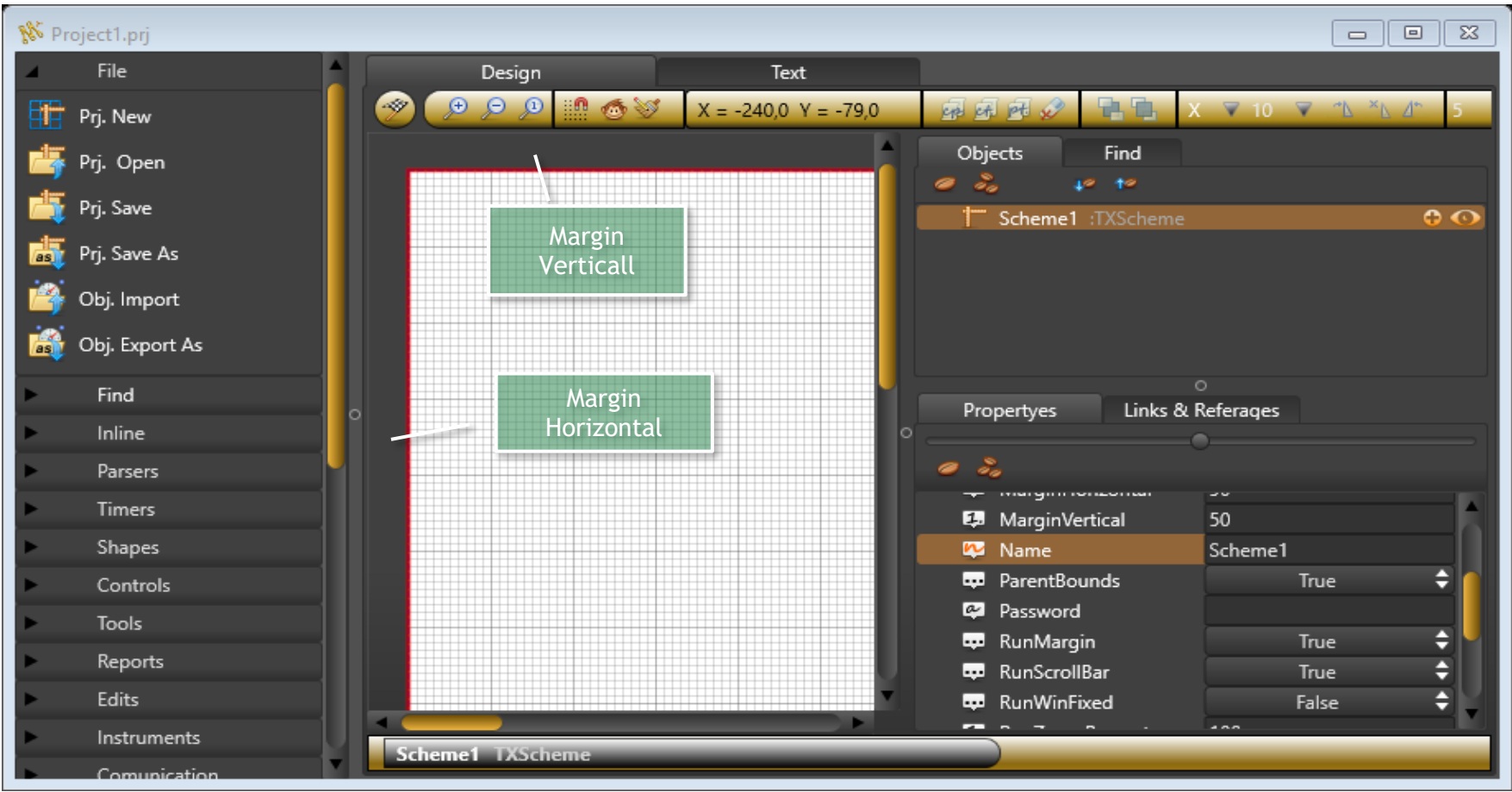




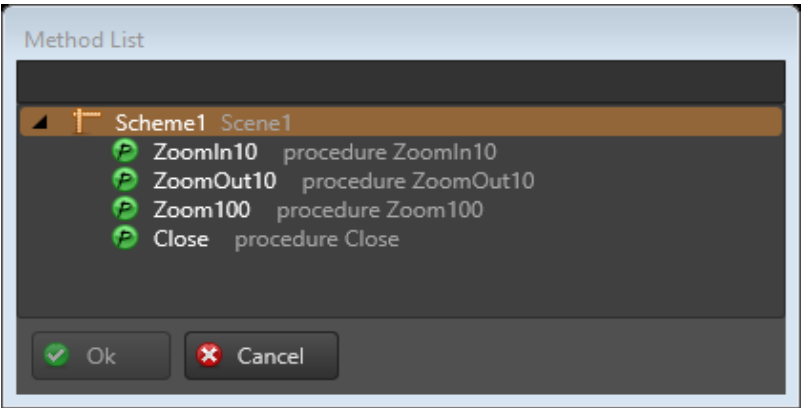
# Base Object For Scada



## Commands :

- ZoomIn10
- ZoomOut10
- Zoom100
- Close

- Zoom + %10
- Zoom - % 10
- Zoom %100
- Close Program



## Functions:

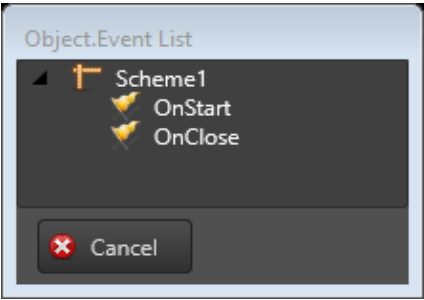
- TestLicense
- GetLicense

- Result Validation License
- Result License Key

## Events :

- OnStart
- OnClose
- OnConnect

- After Run Project
- Before Close Project
- Before Connect Devices
- For Change Com Port#



## Propertyes :

- AlarmError
- AlarmInfo
- RunZoomPercent
- License
- Name
- Size
- Fill
- Stroke
- RunTestIDEVisible
- ObserverTime
- GridFrequency
- ParentBounds
- SnapToGrid
- ShowGrid
- GridMarks
- MarginHorizontal
- MarginVertical

- Global TXAlarm referange
- Catch All Undefined Error Alarms
- Global TXAlarm referange
- Catch All Undefined Info Alarms
- After Run Zoom Percent %
- Embedded License Key
- Scheme Name
- Scheme Size
- After Run IDE is visible
- Time To Observe From Links
- Grid Frequece pixel
- Child Object into Parent Bound
- Moved Object Snap To Grid
- Grid Visible
- Grid Mark Frequence pixel
- Left And Right Margins
- Top An Bottom Margins

<i>RunMargin</i>	<i>Use Margins After run</i>	
<i>RunScrollBar</i>	<i>Scroll Bar Visible after run</i>	
<i>RunWinFixed</i>	<i>Fixed Windows</i>	
<i>RunWinPosition</i>	<i>Fixed Windows Position On Screen</i>	<b>visible if <i>RunWnFixed</i> is true</b>
<i>VersionInfo</i>	<i>Note For Project Version</i>	
<i>Password</i>	<i>Protect Project Design</i>	
<i>RungSimple</i>	<i>Simple appearance of rungs</i>	

## Example

