

3

Settings Instruction Simulate Compile Config Help

Microcontroller > Atmel AVR MCUs >

MCU Parameters... Ctrl+F5

Set Pull-up input resistors

Microcontrollers: TODO and DONE >

Prepare Variable

R\_osc

Read Command

PLC Configuration

PLC Cycle Time (ms): 10,000 Timer0|1: 1 ☐ YPlcCycleDuty OK

MCU Crystal Frequency (MHz): 16,000,000 Cancel

UART Baud Rate (bps): 9600 PIC Configuration Bits: 0

SPI Rate (Hz): 0 I2C Rate (Hz): 0

Available PLC

MCU PLC Tim

000000000000

000000000000

In fact TCycle

TON,TOF,RTC

TON,TOF,RTC

TON,TOF,RTC

TON,TOF,RTC

Serial (UART)

Frame format

The cycle tim

cycle times m

times may no

ms will usuall

The compiler

timing in clock

speed grade

before choosi

Atmel AVR ATmega2560 100-TQFP

Atmel AVR AT90USB647 64-TQFP

Atmel AVR ATmega128 64-TQFP

Atmel AVR ATmega64 64-TQFP

Atmel AVR ATmega162 40-PDIP

Atmel AVR ATmega32U4 44-Pin packages

Atmel AVR ATmega32 44-Pin packages

Atmel AVR ATmega32 40-PDIP

Atmel AVR ATmega16 40-PDIP

Atmel AVR ATmega48 28-PDIP

Atmel AVR ATmega88 28-PDIP

Atmel AVR ATmega168 28-PDIP

Atmel AVR ATmega328 28-PDIP

Atmel AVR ATmega328 32-Pin packages

Atmel AVR ATmega164 40-PDIP

Atmel AVR ATmega324 40-PDIP

1

2

3

ABOUT LDMICRO

LDmicro is a ladder logic editor, simulator and compiler for 8-bit microcontrollers. It can generate native code for Atmel AVR and Microchip PIC16 CPUs from a ladder diagram.

This program is free software: you can redistribute it and/or modify it under the terms of the GNU General Public License as published by the Free Software Foundation, either version 3 of the License, or (at your option) any later version.

This program is distributed in the hope that it will be useful, but WITHOUT ANY WARRANTY; without even the implied warranty of MERCHANTABILITY or FITNESS FOR A PARTICULAR PURPOSE. See the GNU General Public License for more details.

You should have received a copy of the GNU General Public License along with this program. If not, see <<http://www.gnu.org/licenses/>>.

The source code for LDmicro is available at

<http://cq.cx/ladder.pl>

Copyright 2005-2016 Jonathan westhues

Email: user jwesthues, at host cq.cx

Netzer extension by Sven Schlender (C) 2012

<http://www.mobacon.de/wiki/doku.php/en/netzer/index>

Controllino Maxi support 2016

Frederic Rible <[fribble@teaser.fr](mailto:fribble@teaser.fr)>

ARM 32 bits support, SPI & I2C (C) 2019

Jose GILLES <UCP (France)>

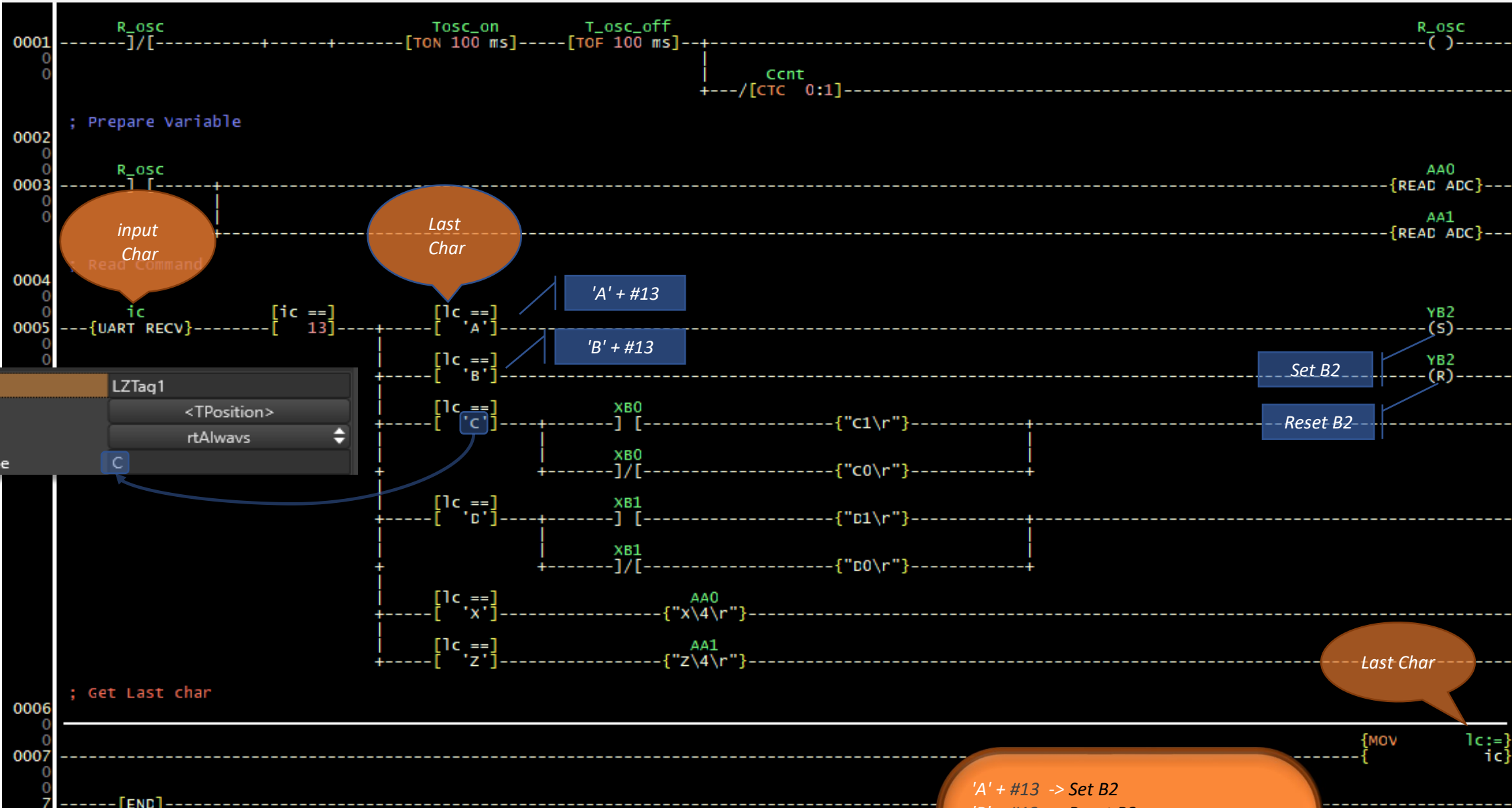
Repository: <https://github.com/joegil95>

LDmicro support:

Repository: <https://github.com/LDmicro/LDmicro>

Email: [LDmicro.GitHub@gmail.com](mailto:LDmicro.GitHub@gmail.com)

Release 5.4.1.1, built 21:01:03 Mar 22 2021.

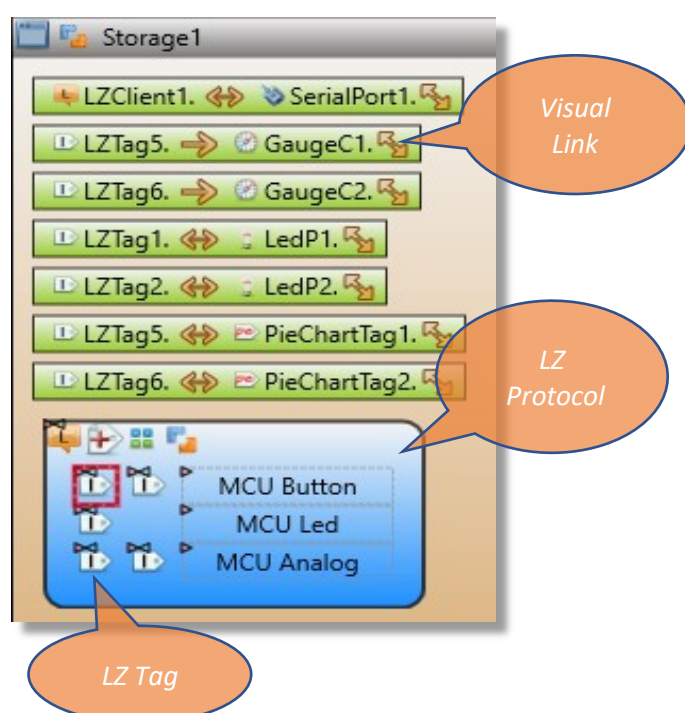
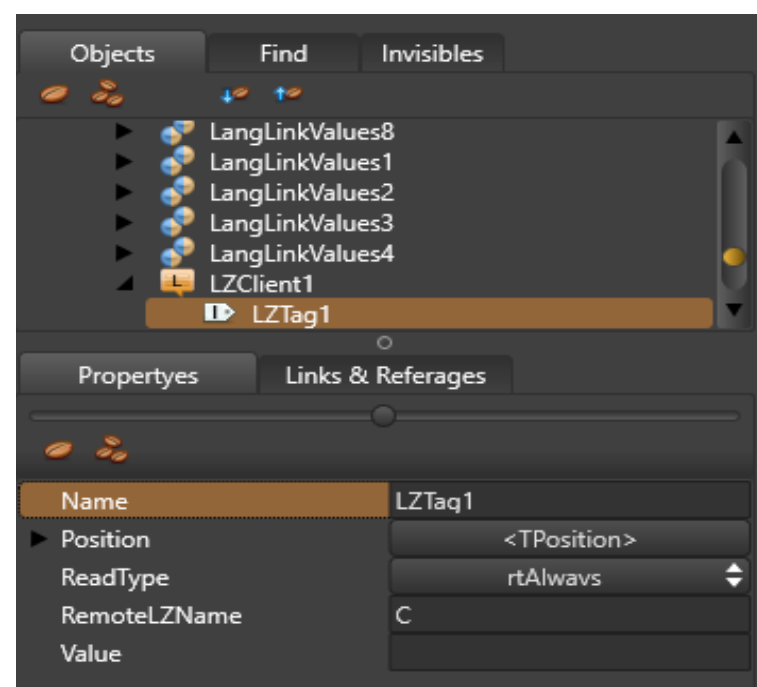
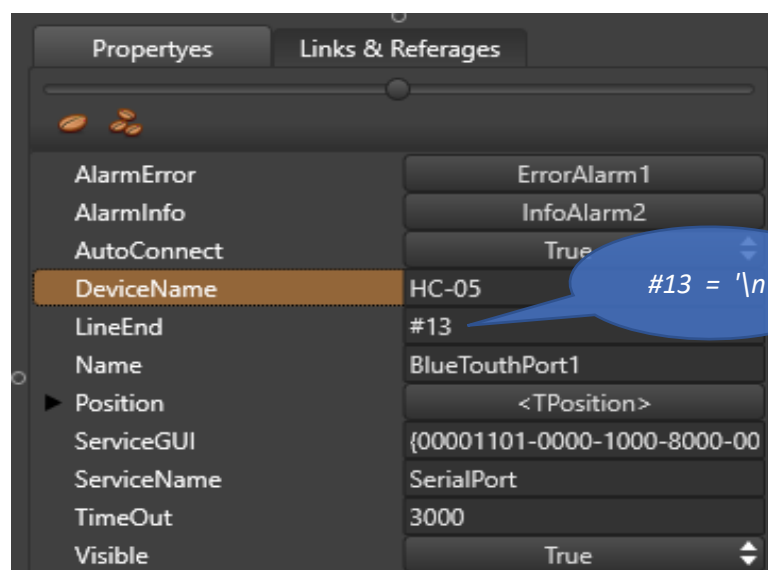
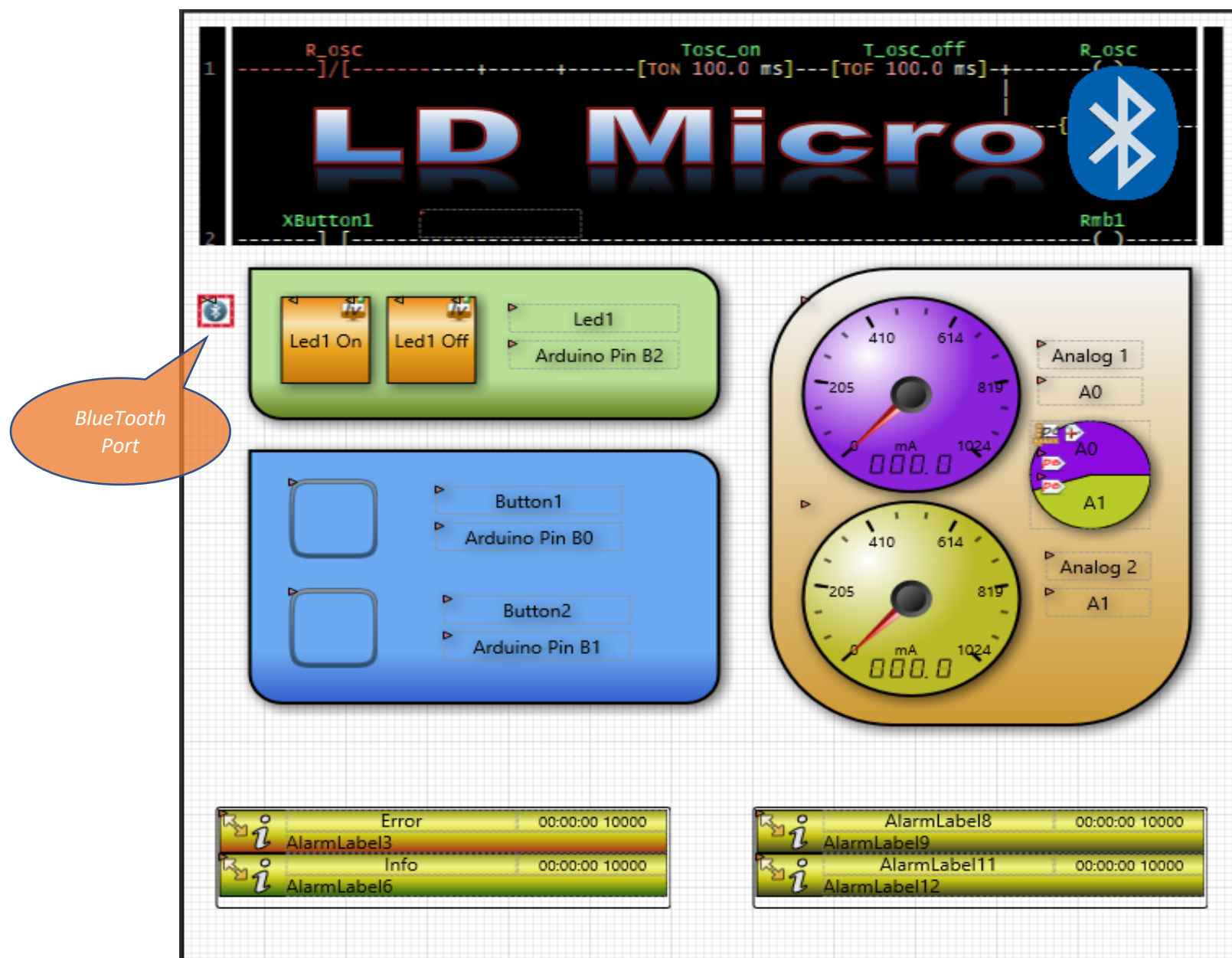


Name	LZTaql
Position	<TPosition>
ReadType	rtAlways
RemotelZName	C

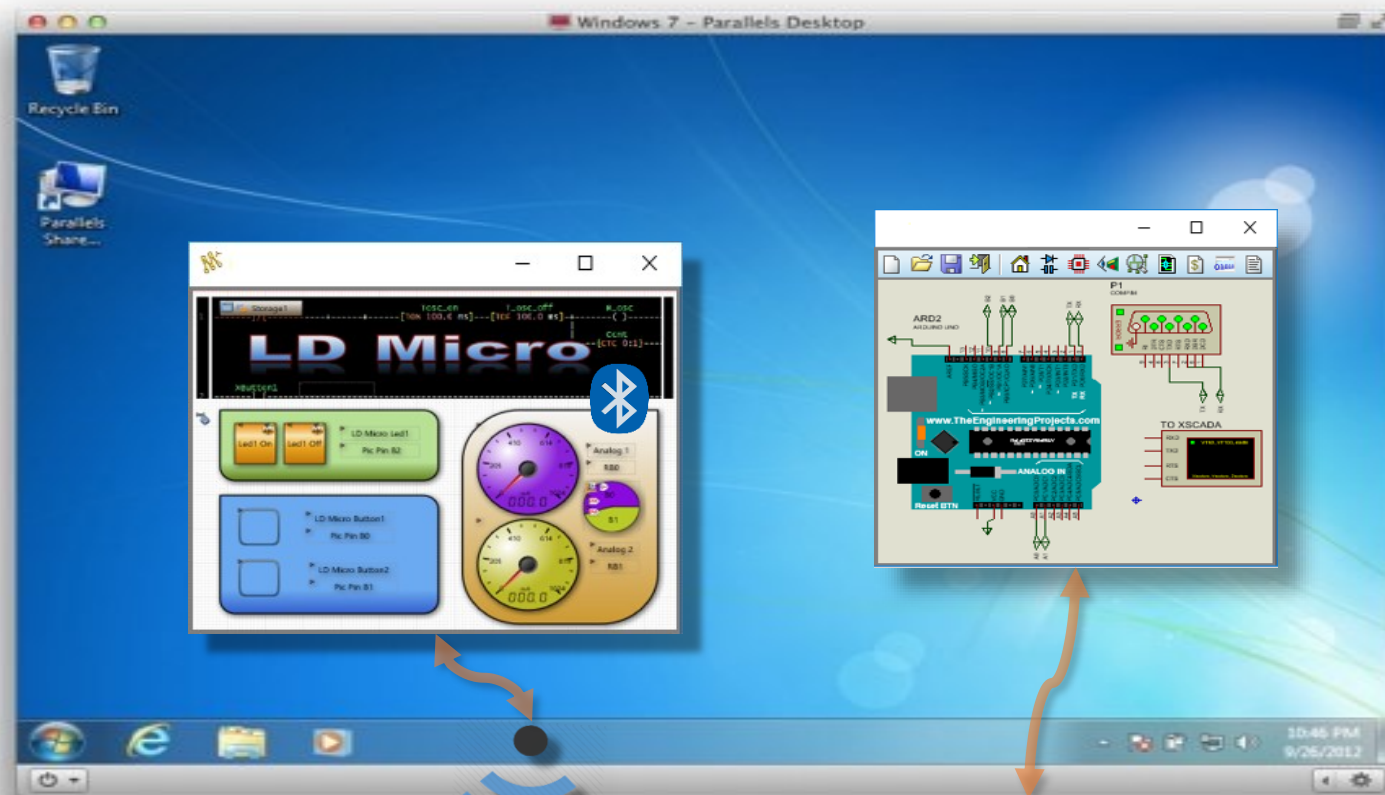
Name	Type	State	Pin on M...	MCU P...	Pin Name
ic	general var	0x0000 = 0			
lc	general var	0x0000 = 0			
Ccnt	counter	0x0000 = 0			
XB0	digital in	0	14	PB0	PB0 PCINT0/CLKO/ICP1
XB1	digital in	0	15	PB1	PB1 OC1A/PCINT1
YB2	digital out	0	16	PB2	PB2_SS/OC1B/PCINT2
AA0	adc input	0x0000 = 0	23	PC0	PC0 ADC0/PCINT8
AA1	adc input	0x0000 = 0	24	PC1	PC1 ADC1/PCINT9
AA0	UART tx	0x0000 = 0	3	PD1	PD1 PCINT17/TXD
AA1	UART tx	0x0000 = 0	3	PD1	PD1 PCINT17/TXD
ic	UART rx	0x0000 = 0	2	PD0	PD0 PCINT16/RXD
R_osc	int. relay	0			
Tosc_on	turn-on delay	0x0000 = 0 = 0 ms			
T_osc_off	turn-off delay	0x0000 = 0 = 0 ms			

Atmel AVR ATmega328 28-PDIP processor clock 16 MHz Tcycle= 10 ms F= 100 Hz F/2= 50 Hz

'A' + #13 -> Set B2  
 'B' + #13 -> Reset B2  
 'C' + #13 -> Need Pin B0 value  
 'C1' + #13 or 'C0' + #13  
 'C' RemoteLZName  
 1 Pin Value  
 'D' + #13 -> Need Pin B0 value  
 'D1' + #13 or 'D0' + #13  
 'D' RemoteLZName  
 0 Input value  
 'X' + #13 -> Need A0 value  
 'X0123' + #13  
 'X' RemoteLZName  
 0123 - Analog value  
 'Z' + #13 -> Need A1 value  
 'Z0123' + #13







AlarmError	ErrorAlarm1
AlarmInfo	InfoAlarm2
AutoConnect	True
DeviceName	HC-05
LineEnd	#13
Name	BlueTouthPort1
Position	<TPosition>
ServiceGUI	{00001101-0000-1000-8000-00
ServiceName	SerialPort
TimeOut	3000
Visible	True



HC 05 defaults  
BPS 9600

Need  
Paired

- Galaxy Note4
- HC-05
- USB2.0-CRW

