



Gauge Display Number Component

Events :

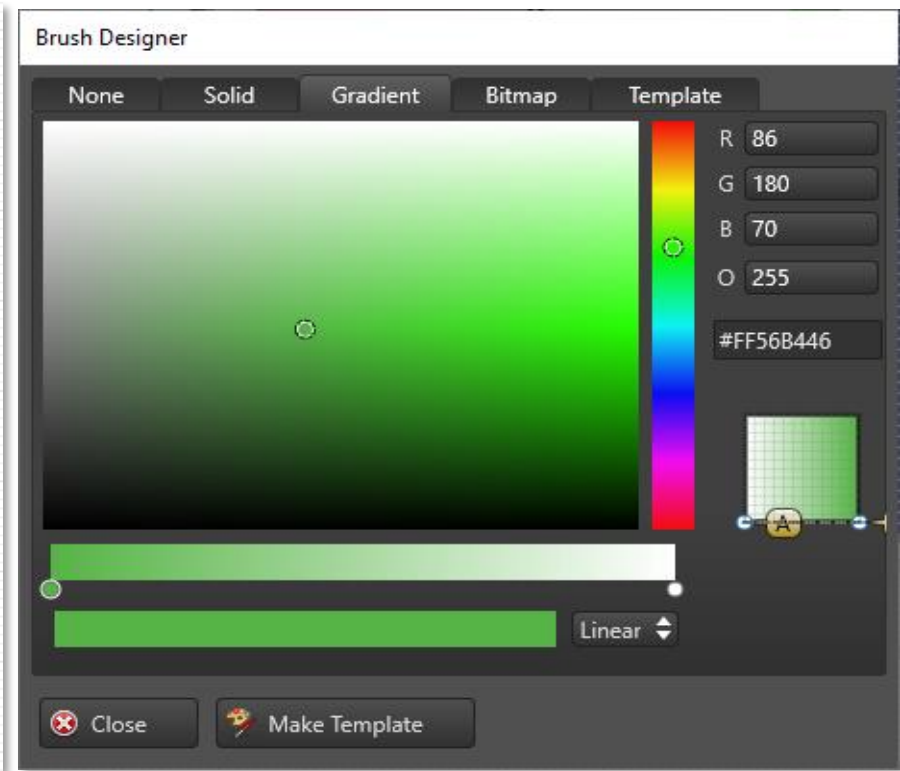
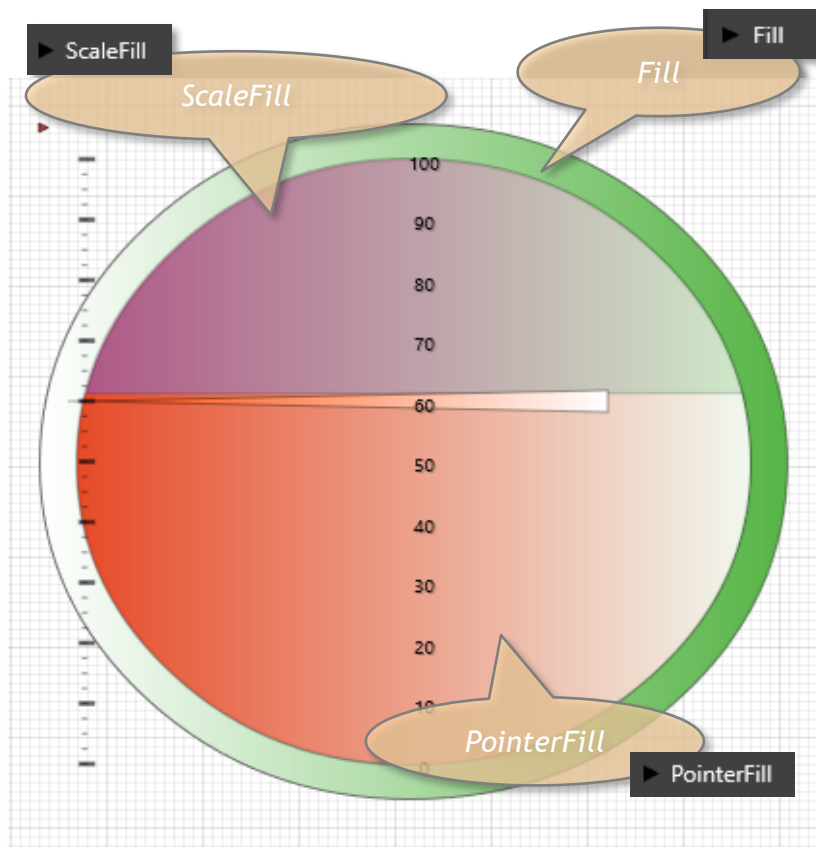
OnRangeError OnRangeError

Propertyes :

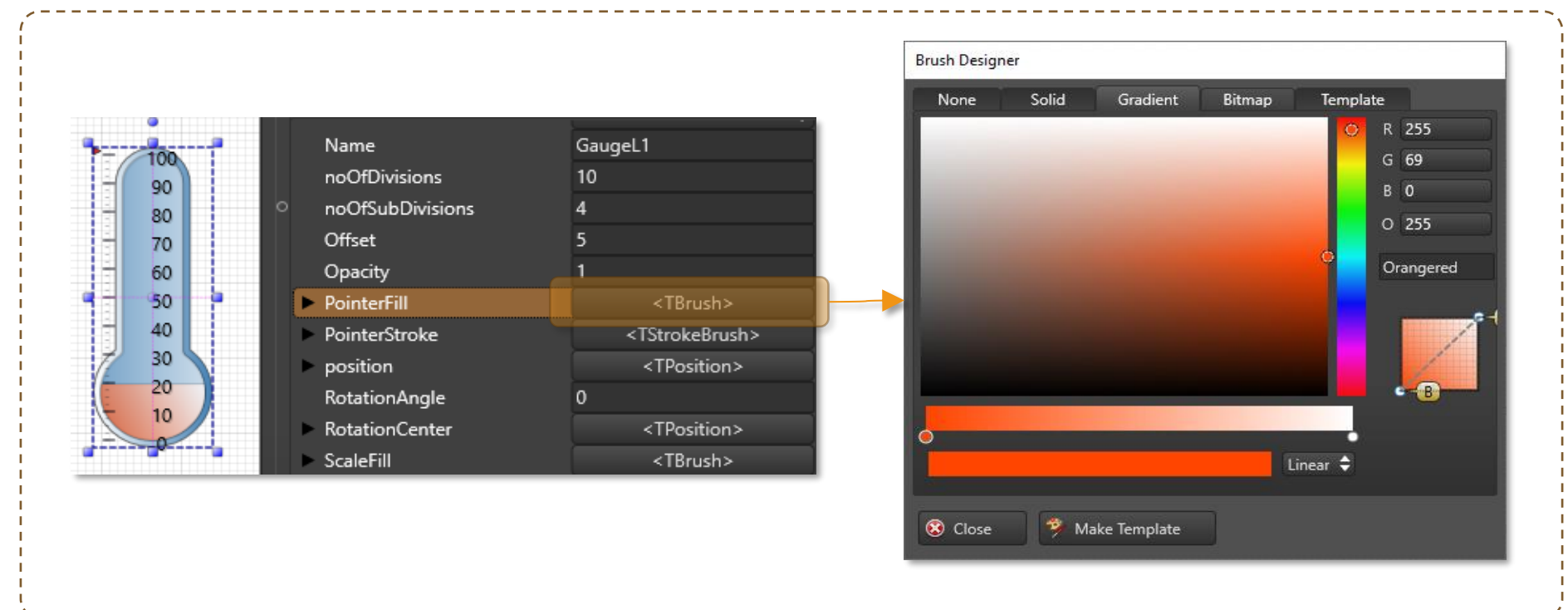
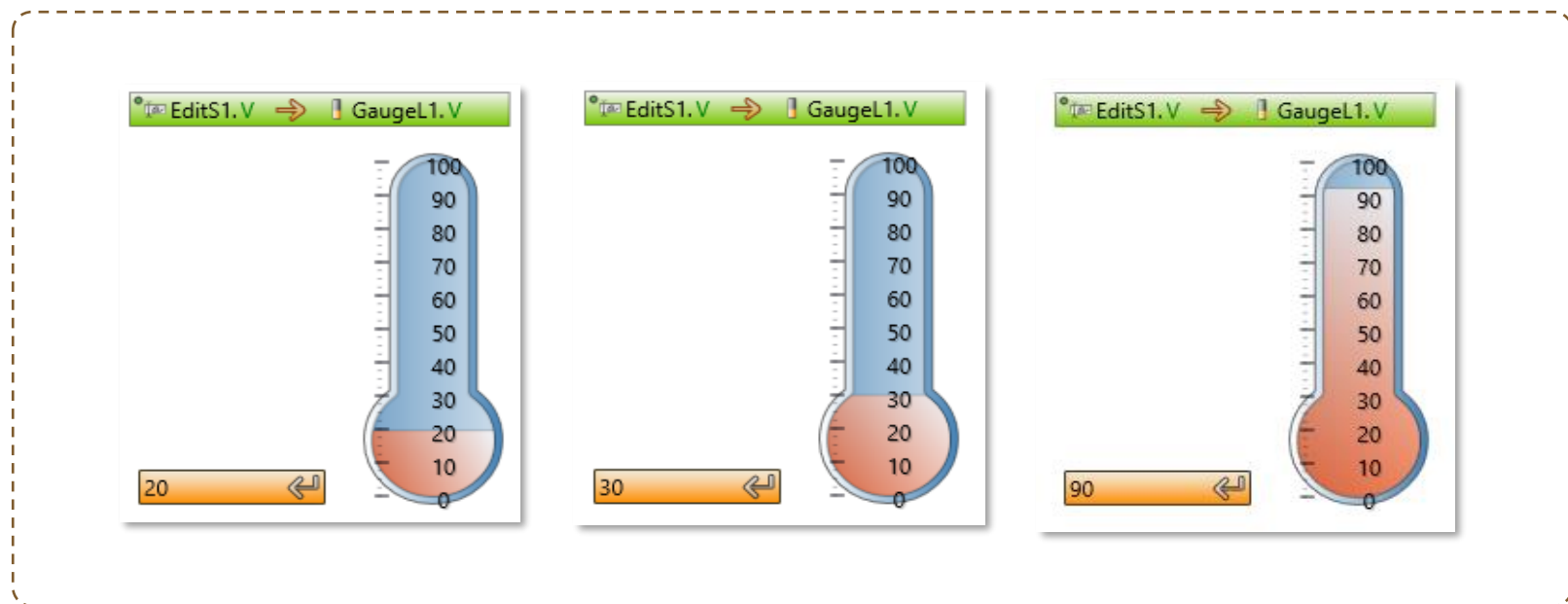
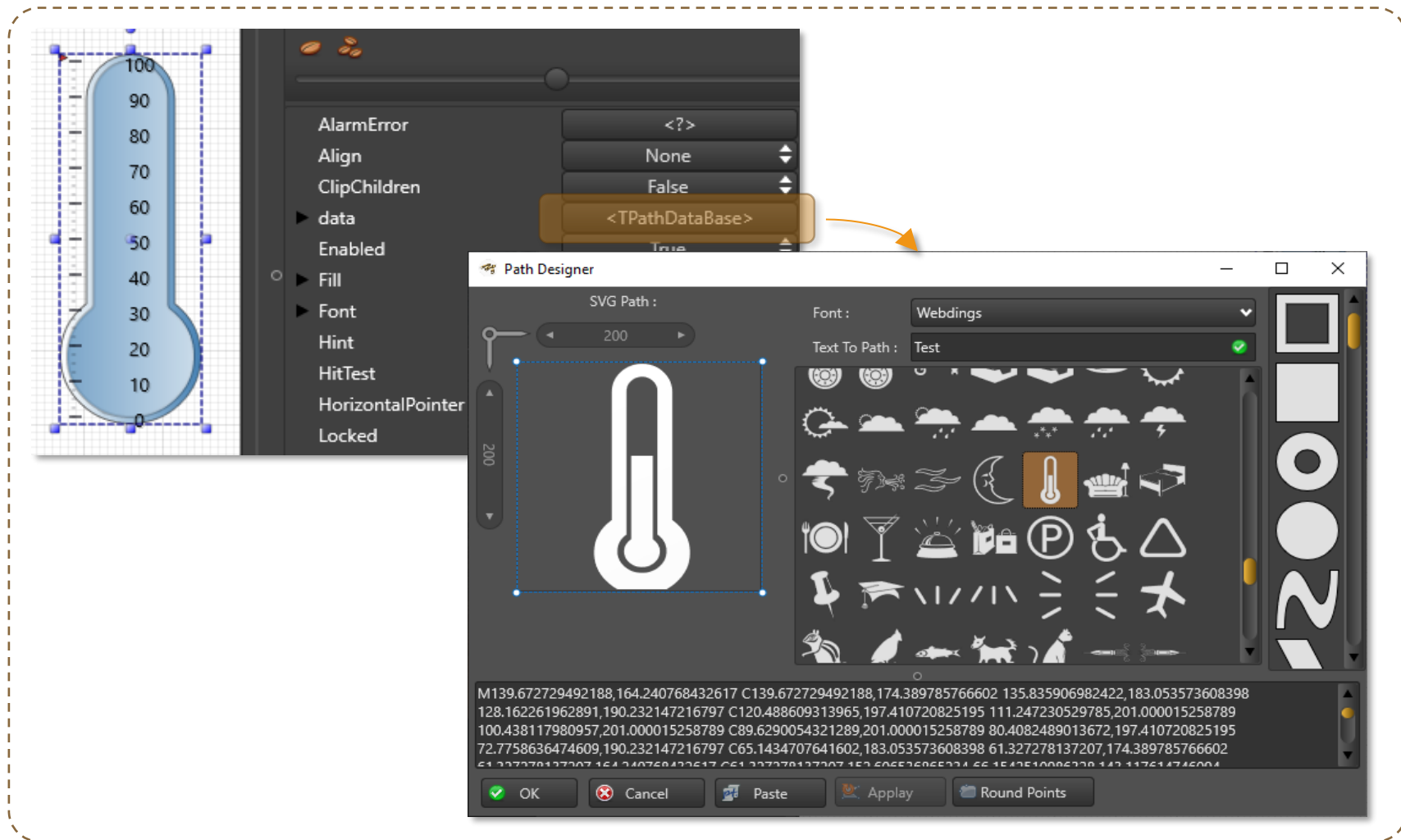
AlarmError Range Alarm Link
ValueMax Maximum Value
ValueMin Minimum Value
HorizontalPointer Triangle Pointer Visible
VertikalPointer Rectangle Pointer Visible
noOfDivisions Division number
noOfSubDivisions SubDivision number
ValuesVisible Show Or Hide Values
Data Vector Skin Data

The diagram shows a circular gauge with a vertical scale from 0 to 100. The gauge is divided into two main sections: a blue upper section and a red lower section. A horizontal pointer is visible at the 60 mark. Callouts identify various components: Divisions (the main scale markings), SubDiviions (the smaller markings between main divisions), Offset (the distance from the center to the scale), Scale (the numerical values on the scale), H. Pointer (the horizontal pointer), and V. Pointer (the vertical pointer).

Properties	Links & Referages	Log Messages
Propertyes (?) : <input type="text"/> Filter		
AlarmError	<?>	
Align	None	
ClipChildren	False	
data	<TPathDataBase>	
Enabled	True	
Fill	<TBrush>	
Font	<TFont>	
Hint		
HitTest	True	
HorizontalPointer	True	
Locked	False	
Name	GaugeL1	
noOfDivisions	10	
noOfSubDivisions	4	
Offset	10	
Opacity	1	
PointerFill	<TBrush>	
PointerStroke	<TStrokeBrush>	
position	<TPosition>	
RotationAngle	0	
RotationCenter	<TPosition>	
ScaleFill	<TBrush>	
ScaleStroke	<TStrokeBrush>	
ScaleVisible	True	
ShowHint	False	
Size	<TControlSize>	
Stroke	<TStrokeBrush>	
Value	60	
ValueAround	False	
ValueMax	100	
ValueMin	0	
ValuesColor	Black	



Example



Example

