

Call Method Component

Using :

Call Procedure or Function Rung

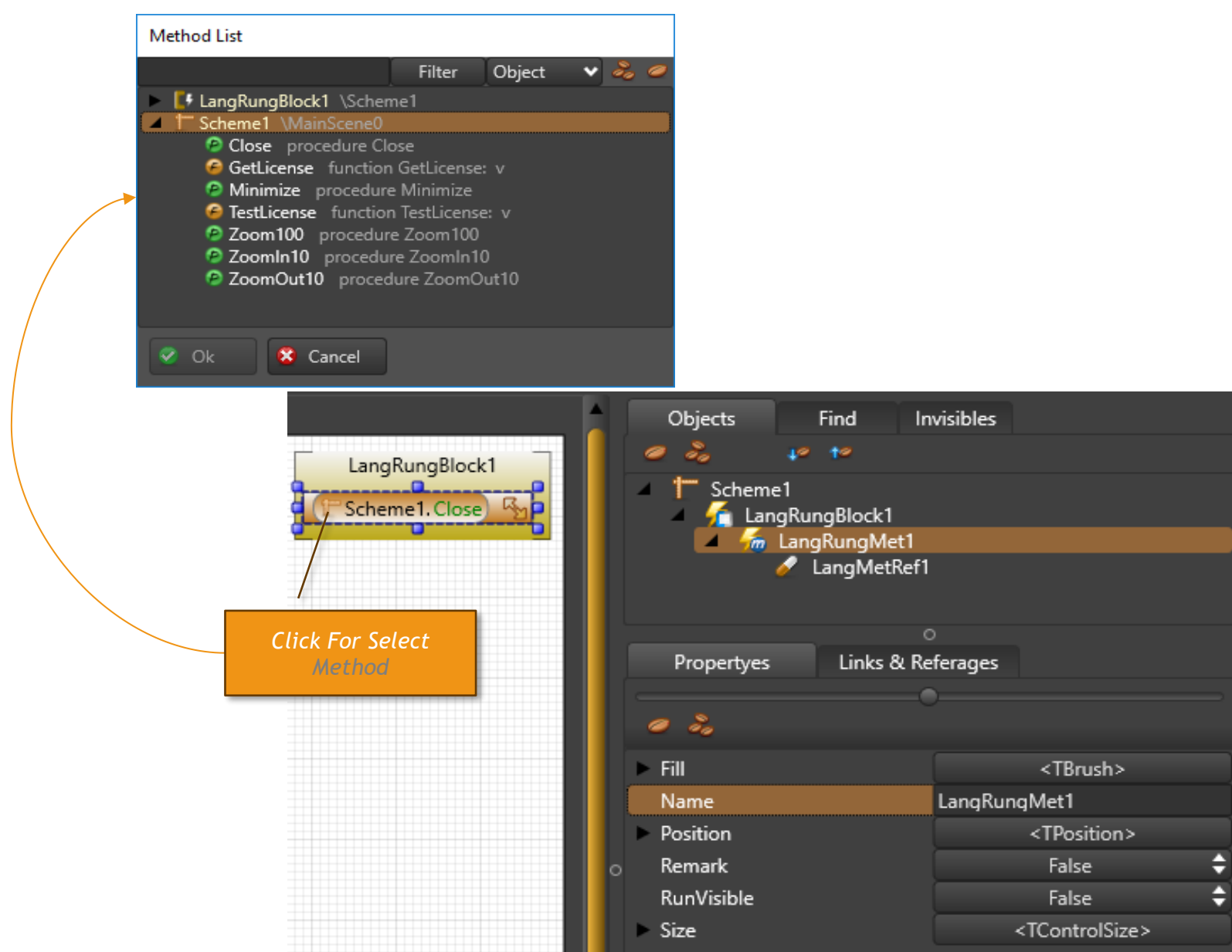
Object1.Property1 = SCopy(Object2.Property , 1 , 2)

SubObjects :

TXLangPropRef	Result Property Referange
TXLangBracket	Calculation Block Bracket
TXUtilslib	Utils Function and Procedure (Command) Library

Propertyes :

Remark	Skip Calculation
--------	------------------



note :

Method = (**Procedure** or **Function**)

Command = (**Procedure** Without Parameters)

Procedure = **Method** Without Result

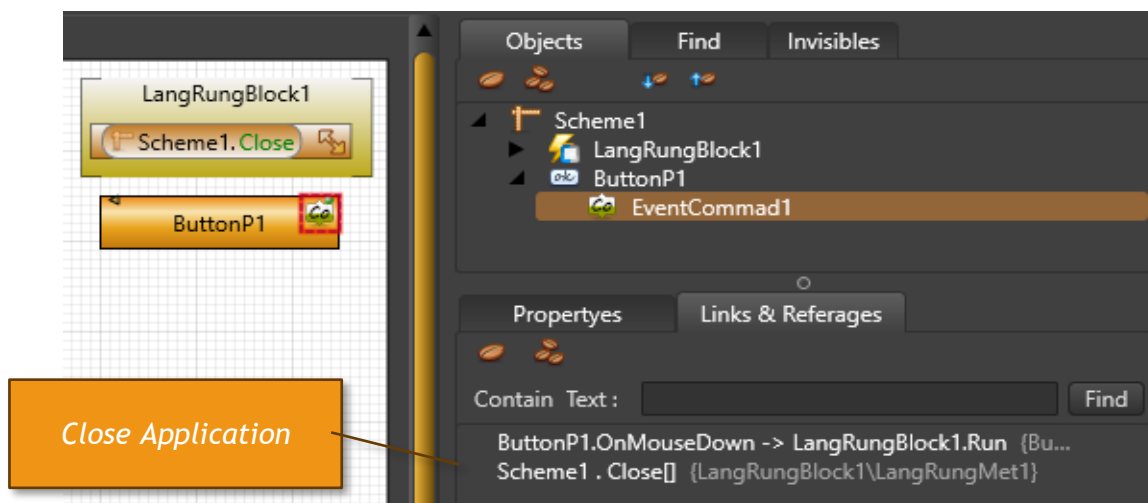
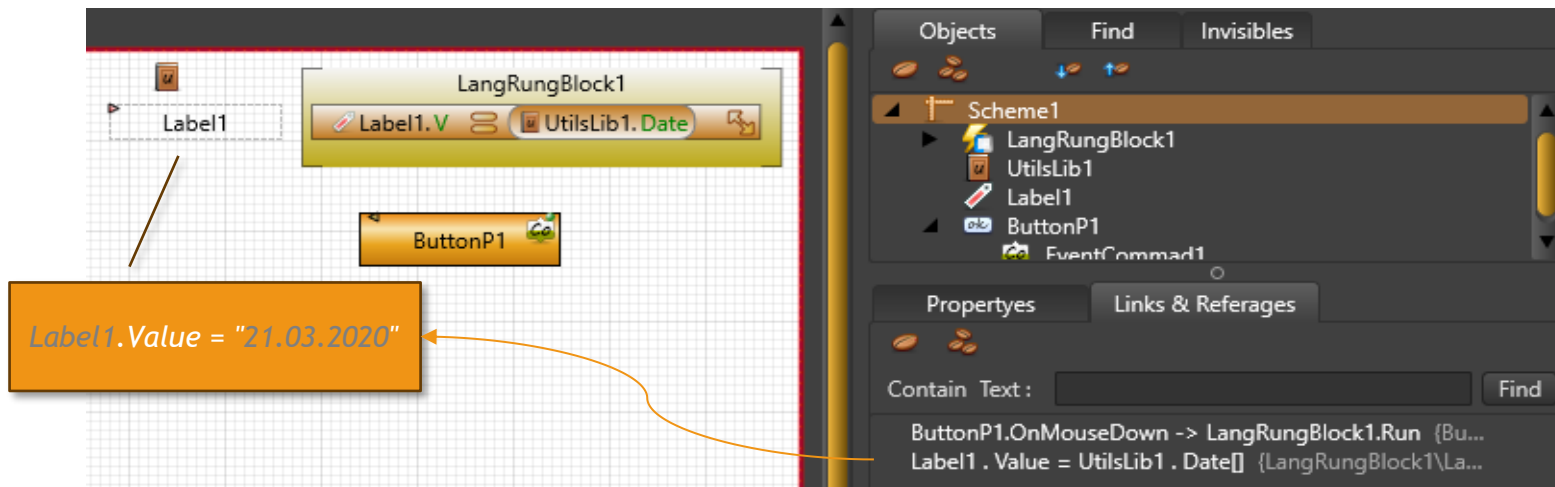
Function = **Method** With Result

Memos1 . Clear

Memos1 .AddLine ("Line1")

DigitalN1 .Value = **Memos1** . GetLineNo (1)

Example



FUNCTIONS

FUNCTIONS

U UtilsLib

Start Rung

LangRungBlock1

Label1.V u.RndValue 1000

Label2.V u.RndText 10

Label3.V u.Date

Label4.V u.Time

Label5.V u.SCopy "TEST" 1 3

Label6.V u.SLength "ABC"

Label7.V u.SStartWith "Hello" "H"

Label8.V u.SEndWith "ABC" "X"

Label9.V u.SCode "ABC"

Label10.V u.SDecode Label9.V

Label11.V u.SJustText "A45"

Label12.V u.SJustNumber "A45"

Label13.V u.ValueToHex 255 4

Label14.V u.ValueToBin 100 8

Label15.V u.SetValueBit 0 7 1

Label16.V "<" u.RndText 5 ">"

Label17.V u.SLength u.Time

Label18.V u.NotValue True

Label19.V u.Date + 1

Rectangle1.RotationAngle Rectangle1.RotationAngle + 0.5

Start Rung

LangRungBlock1

Label1.V u.RndValue 1000

Label2.V u.RndText 10

Label3.V u.Date

Label4.V u.Time

Label5.V u.SCopy "TEST" 1 3

Label6.V u.SLength "ABC"

Label7.V u.SStartWith "Hello" "H"

Label8.V u.SEndWith "ABC" "X"

Label9.V u.SCode "ABC"

Label10.V u.SDecode Label9.V

Label11.V u.SJustText "A45"

Label12.V u.SJustNumber "A45"

Label13.V u.ValueToHex 255 4

Label14.V u.ValueToBin 100 8

Label15.V u.SetValueBit 0 7 1

Label16.V "<" u.RndText 5 ">"

Label17.V u.SLength u.Time

Label18.V u.NotValue True

Label19.V u.Date + 1

Rectangle1.RotationAngle Rectangle1.RotationAngle + 0.5

565

LOKWNOWGLG

20.12.2020

15:37:00

TES

3

True

False

414243

ABC

A

45

00FF

01100100

128

<EPMP>

8

False

21.12.2020

ButtonP1.OnMouseDown -> LangRungBlock1.Run {ButtonP1...
Label1 . Value = u . RndValue[(1000)] {LangRungBlock1\Lang...
Label10 . Value = u . SDecode[(Label9 . Value)] {LangRungBl...
Label11 . Value = u . SJustText[("A45")] {LangRungBlock1\La...
Label12 . Value = u . SJustNumber[("A45")] {LangRungBlock...
Label13 . Value = u . ValueToHex[(255) (4)] {LangRungBlock...
Label14 . Value = u . ValueToBin[(100) (8)] {LangRungBlock...
Label15 . Value = u . SetValueBit[(0) (7) (1)] {LangRungBloc...
Label16 . Value = ("<" + u . RndText[(5)] + ">") {LangRung...
Label17 . Value = (u . SLength[(u . Time)]) {LangRungBloc...
Label18 . Value = u . NotValue[(True)] {LangRungBlock1\Lang...
Label19 . Value = (u . Date[] + 1) {LangRungBlock1\LangRu...
Label2 . Value = u . RndText[(10)] {LangRungBlock1\LangRu...
Label3 . Value = u . Date[] {LangRungBlock1\LangRungMet3}
Label4 . Value = u . Time[] {LangRungBlock1\LangRungMet4}
Label5 . Value = u . SCopy[("TEST") (1) (3)] {LangRungBlock...
Label6 . Value = u . SLength[("ABC")] {LangRungBlock1\Lang...
Label7 . Value = u . SStartWith[("Hello") ("H")] {LangRungBl...
Label8 . Value = u . SEndWith[("ABC") ("X")] {LangRungBloc...
Label9 . Value = u . SCode[("ABC")] {LangRungBlock1\Lang...
Rectangle1 . RotationAngle = (Rectangle1 . RotationAngle + 0.5)