



TCP Client Component

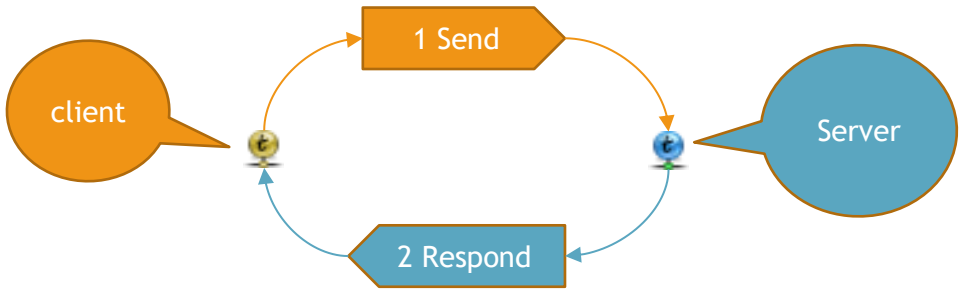
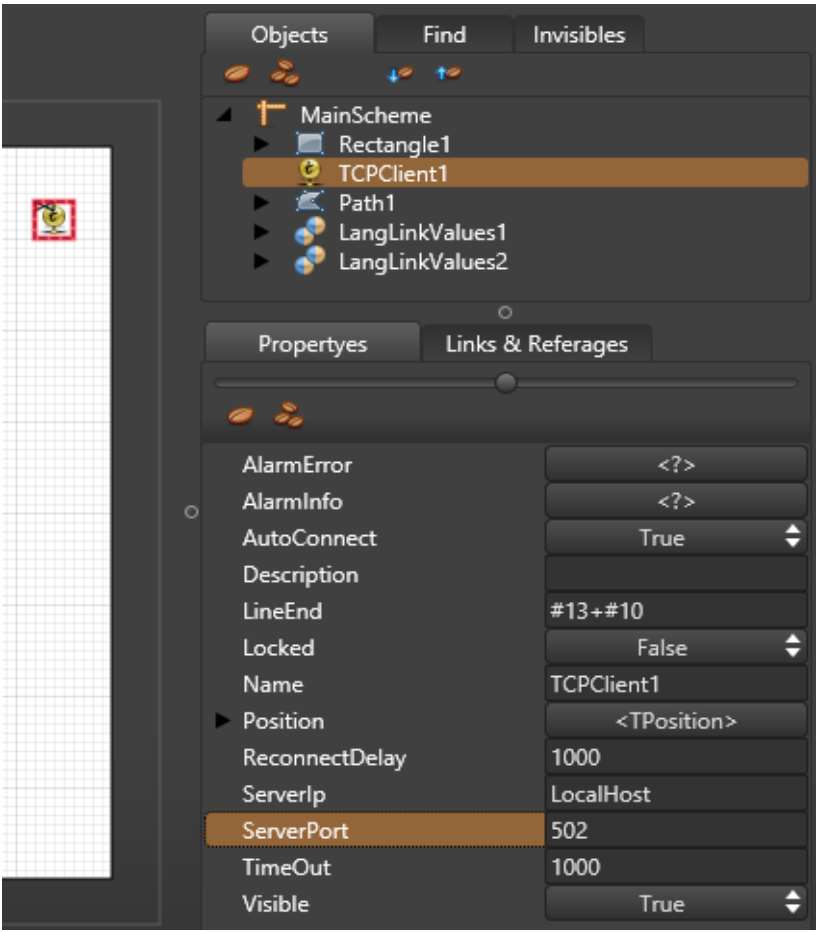
Using :
For Send Value Send To The Server Over TCP

Events :
OnReciveValue Afrer Recive Value

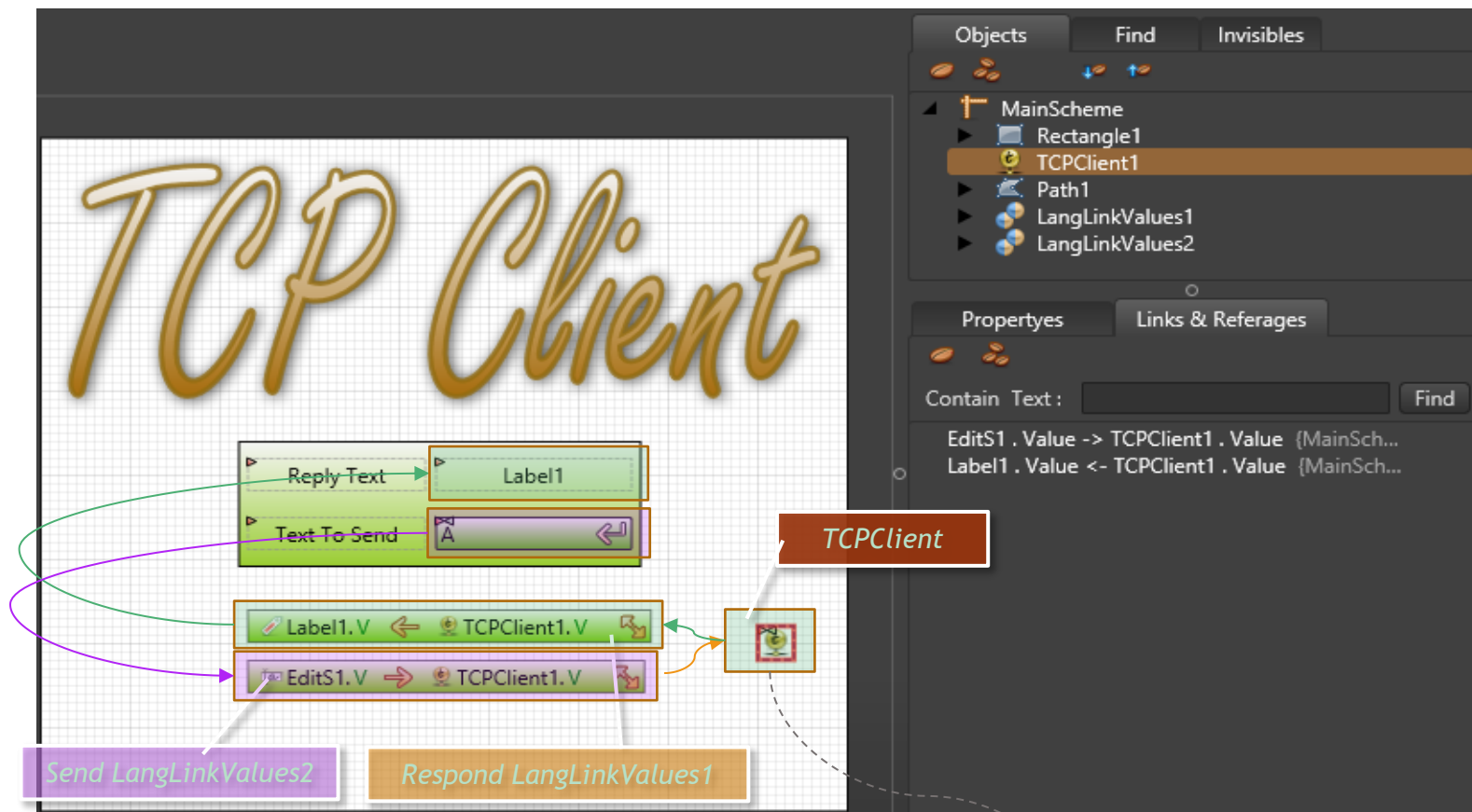
Propertyes :

AlarmError	TXAlarm
AlarmInfo	TXAlarm
LineEnd	Terminate String
ServerPort	Port No
TimeOut	Read and Connect Time Out milisecond.
Value	

Note :
Should be answered in TimeOut Time



Example



AlarmError	<?>
AlarmInfo	<?>
AutoConnect	True
Description	
LineEnd	#13+#10
Locked	False
Name	TCPClient1
Position	<TPosition>
ReconnectDelay	1000
ServerIp	LocalHost
ServerPort	502
TimeOut	1000
Visible	True

